



Enactus: Emerging Leader Course

Fall 2018 Course Syllabus

GEB 4932: 5302
Tuesdays & Thursdays 4:05-6pm**
Heavener 250
University of Florida • Heavener School of Business

What is Enactus?

Enactus is a hands-on social entrepreneurship program that encourages you to create and execute sustainable entrepreneurial-based community empowerment projects. By taking concepts you learn in the classroom and applying them in real world settings, you will develop the skills and perspective to become socially responsible business leaders and effective project managers, while making a difference in your communities. UF Enactus is one of 1600 chapters around the world. UF Enactus is one of the leadership opportunities offered by the Heavener Career and Leadership Programs team.

What is covered in the Emerging Leader Course?

The Emerging Leader course will help students grow in their project management and leadership skills and build their awareness of the development sector. Emerging Leaders will complete the PMD Pro Certification Program online outside of class to develop the technical skills needed to be an Enactor. During class time, Emerging Leaders will first explore the ideas of Inclusive Leadership and then social issues and assets in Gainesville, the U.S. and internationally.

What should you *know* and be able to *do* by the end of the course?

As an Emerging Leader in Enactus taking this course:

- You will develop entrepreneurial and project management skills from project design to implementation and through project transition.
- You will foster an understanding of local, national, and global social issues and opportunities and apply this knowledge to improve and develop community projects.
- You will expand on your leadership skills by evaluating your personal talents and mindsets, collaborating with a team, and building an appreciation for diverse perspectives and experiences.

****What's the difference between the Emerging Leader Course and Enactus time?**

- Veterans and Emerging Leaders attend on Tuesdays from 4:05-6pm.
 - Tuesdays are dedicated to Enactus updates led by the Project Support Team (PST), professional development for both Emerging Leaders and veterans, collaboration across projects, and time for teams to work on projects.
- Emerging Leaders attend class on Thursdays from 4:05-5pm.
 - This two-credit course is required for all students who are new to Enactus. Veterans are not required to attend this class time. Emerging Leaders have additional work to complete for the course outside of project expectations.
- Veterans and Emerging Leaders have project work time from 5-6pm on Thursdays.

Who are your EL Course instructors?

Erin Bowler

Email: erin.bowler@warrington.ufl.edu

Office Hours: By appointment



I earned a B.A degree in History from Boston College, a M.S.T. degree in Childhood Education from Pace University, and a M. Ed. degree in Higher Education Administration from Northeastern University. I have over a decade of experience in teaching, advising, program management, and curriculum design. I currently serve as the Program Coordinator for Career and Leadership Programs in the College of Business. In my spare time, I enjoy spending time with my newborn son and husband and going on adventures! My top 5 themes are: Context, Restorative, Woo, Harmony, and Communication.

Jenny Martinez

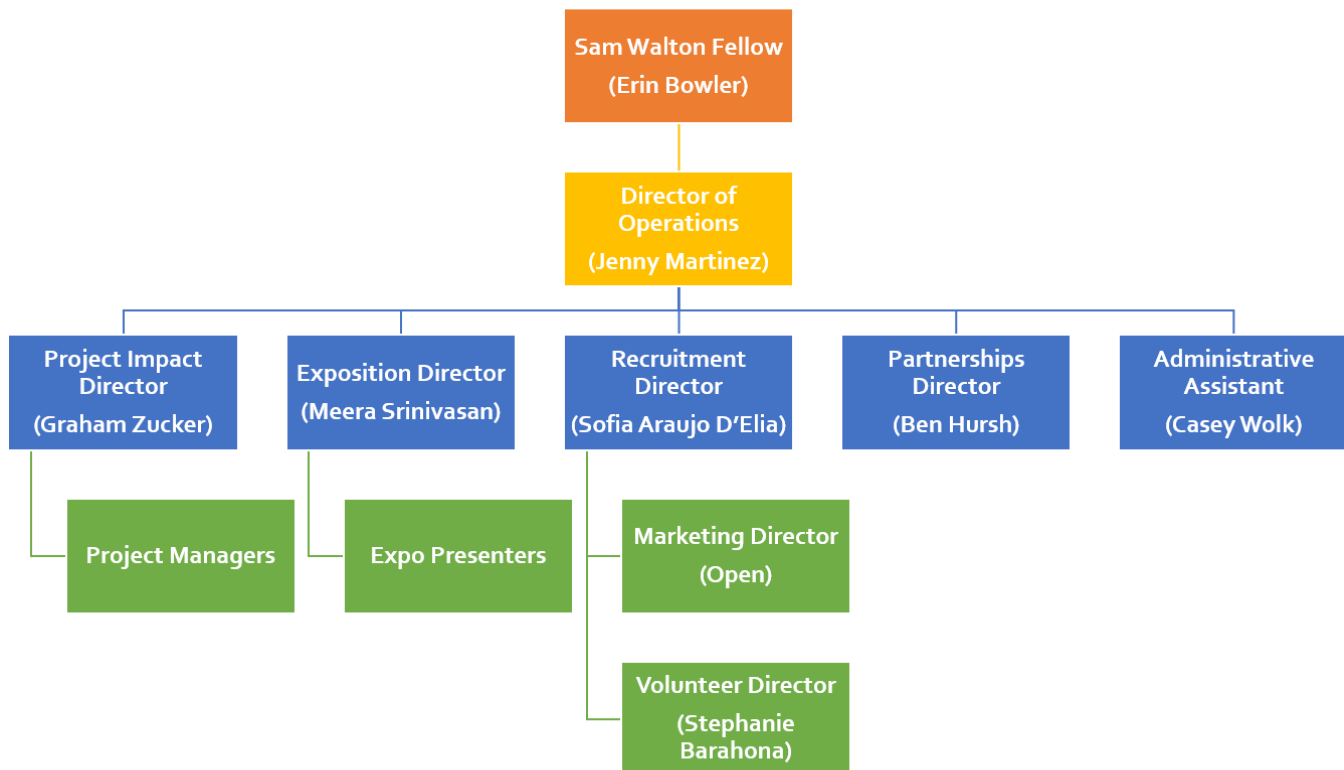
Email: jmjenny@ufl.edu



I am a combined degree student earning a B.S. in Management and a M.S. in ISOM. I am involved with Gatortech and the newly founded Tech Case Competition Team. I also interned at Jabil this past summer and work part time as a program assistant at Clinical and Translational Science Informatics Technology (CTS-IT) at UF. Within Enactus, I have served as a volunteer and project manager for Strides, Volunteer Director, and currently serve as the Director of Operations. In my free time, I like to spend time with my friends and family, and exploring new places. My top 5 themes are: Focus, Futuristic, Competition, Significance, and Achiever.

Who is the Project Support Team?

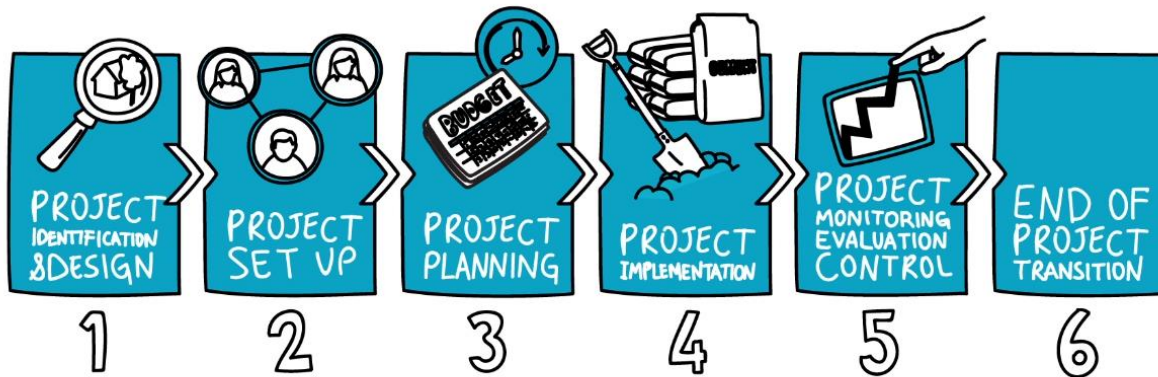
The Project Support Team (PST) is the student advisory board for Enactus. These student leaders help you develop your projects and dedicate their time to building and maintaining the Enactus UF chapter.



What is the PMD Pro Certification Program?

The Heavener School of Business is sponsoring your enrollment and certification in this online program through the Enactus Training Center. The PMD Pro was developed with experts from several of the world's best-known/highly regarded non-governmental organizations. The certification provides its users with the necessary tools and principles to run their projects in the most efficient and organized manner while allowing for continuous improvement. It teaches its users a platform that optimizes project investment and scope of impact.

Here are the six phases of project management about which you will learn:



What is Inclusive Leadership?

An inclusive environment is one which carefully includes all stakeholders and diverse members of the organization or community. All stakeholders feel respected and are encouraged to participate by sharing their experiences and perspectives. Deloitte Australia conducted a study of leaders from Australia, New Zealand, Singapore, Hong Kong, Canada, and the U.S. and discovered that inclusive leaders possess six signature traits (The Wall Street Journal, 2016). In this course, we will explore each of these characteristics to help you better understand yourself and others and prepare you to work in the development sector. The six signature traits that Deloitte uncovered are pictured below.

Figure 1. The six signature traits of an inclusive leader



What are the course policies?

Attendance

In a professional setting, punctuality is necessary for building a positive personal brand and demonstrating responsibility. Students are expected to be punctual in class attendance and remain in the classroom for the entire class session, as they would in any business appointment, unless an urgent need arises or prior arrangements have been made with the instructor (and documentation has been provided). Each unexcused absence will result in attendance points being lost.

Cell Phones

Avoid using cell phones in class, which can prevent you and others from learning. In case of emergency, please take your phone outside.

Email

Official university communications, all notifications from this class, and PST communications are sent to your UF email account. As a professional, we encourage you to actively check your UF account and respond to emails within 48 hours of receiving them.

ADA Statement

UF provides high-quality services to students with disabilities, and we encourage you to take advantage of them. Students with disabilities needing academic accommodations should:

1. Register with and provide documentation to Disability Resources (<http://www.dso.ufl.edu/drp/>)
2. Bring a letter to the instructor from Disability Resources indicating that you need academic accommodations.

Please do this as soon as possible, preferably within the first week of class.

What is the EL course calendar?

Theme	Date	Class Topic	Homework
	8/23	Intro & What is Enactus?	Attend Enactus Retreat on Saturday, August 25 th
6 Traits of Inclusive Leadership	8/30	<i>Collaboration</i> : Team-Building	Complete PMD Pro: Level 1
	9/6	<i>Commitment</i> : Values & Mission Statements	Complete PMD Pro: Level 2
	9/13	<i>Courage</i> : Growth Mindset & Vulnerability	Complete PMD Pro: Level 3
	9/20	<i>Curiosity</i> : Active Listening	Complete PMD Pro: Level 4
	9/27	<i>Cognizance of Bias</i> : Separating Individuals from Stereotypes	Complete PMD Pro: Level 5
	10/4	<i>Cultural Intelligence</i> : Seeing Cultural Differences as Assets	Complete PMD Pro: Level 6
Intro to Social Issues & Assets	10/11	Understanding Gainesville: History Tour	Complete PMD Pro: Level 7
	10/18	Enactus Case Studies: U.S.	Complete PMD Pro: Level 8
	10/25	Enactus Case Studies: International	Complete PMD Pro: Level 9
	11/1	Field Trip: Visit the Center for Innovation & Economic Development (CIED)	Take the PMD Pro Practice Exam
	11/8	Proctored PMD Pro Assessment	Begin EL Case Presentation
	11/15	EL Case Lab	Work on EL Case Presentation
	11/22	No Class - Thanksgiving	Work on EL Case Presentation
	11/29	EL Case Presentations	Get excited for next semester!
	12/6	No Class – Reading Days	

Please note: This syllabus is subject to change as needed. Any changes will be communicated in a timely manner.

What are the course assignments and how are you graded?

Assignments	Possible Points
Attendance and Participation <ul style="list-style-type: none"> You will receive 2.5 attendance and participation points every Thursday. As with all leadership programs within the Heavener School, active engagement and participation is key in your success. Be prepared to participate actively in class discussions and activities. You are encouraged to take notes each class for you to reference in the future. 	35
PMD Pro Certification Exam <ul style="list-style-type: none"> This certification exam will be proctored on Thursday, November 8th. The exam is pass/fail. You will receive all allotted points for passing the exam and receiving the PMD Pro certification. 	40
EL Case Presentation <ul style="list-style-type: none"> The EL Case Presentation is the final assignment for the EL Course and is due on Thursday, November 29th. In groups, you will research a social issue and/or asset and determine and present on an action plan for a potential new project. More information on this assignment will be distributed in November. 	25
TOTAL	100

Grades will be based on the scale below with a total of 100 points possible:

A	93-100	B	83-86	C	73-76	D	63-66
A-	90-92	B-	80-82	C-	70-72	D-	60-62
B+	87-89	C+	77-79	D+	67-69	E	0-59

Please note: Late work is not accepted. Students who earn a B or lower are subject to losing their Enactus status.

Academic Honor Code & Academic Honesty

Preamble: In adopting this Honor Code, the students of the University of Florida recognize that academic honesty and integrity are fundamental values of the University community. Students who enroll at the University commit to holding themselves and their peers to the high standard of honor required by the Honor Code. Any individual who becomes aware of a violation of the Honor Code is bound by honor to take corrective action. The quality of a University of Florida education is dependent upon community acceptance and enforcement of the Honor Code.

Pledge: On all work submitted for credit by students at the University of Florida, the following pledge is either required or implied:

"On my honor, I have neither given nor received unauthorized aid in doing this assignment."

An academic honesty offense is defined as the act of lying, cheating, or stealing academic information so that one gains academic advantage. As a University of Florida student, one is expected to neither commit nor assist another in committing an academic honesty violation. Additionally, it is the student's duty to report observed academic honesty violations. Violations of the Honor Code and academic dishonesty will not be tolerated. Specifically, instructors will rigorously pursue incidents of plagiarism of any type or incidents of referring to any unauthorized material for any class requirement.

Before submitting any work for this class, please read the policies about academic honesty at www.dso.ufl.edu/sccr, and ask the instructors to clarify any expectations you do not understand.